



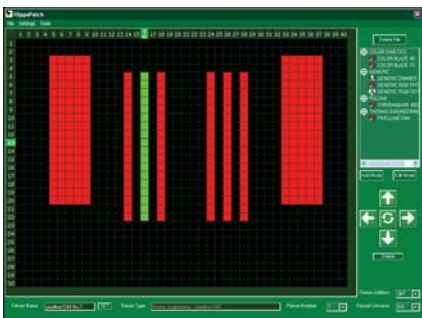
Pixelmapper

There's a flood of new LED control programs out there. There are also some new media servers out there. So you could buy one of each...or you could just buy the Media Server Of The Year* and do it all from one system!...It's your call!

Hippotizer is the only fully-fledged media server that can play high quality video with realtime effects AND control LED simultaneously. With the stage you can use 4 layers for video and 4 separate layers for LED. Why consider anything else?

- Fast and intuitive mapping interface
- Personalities for most available fixtures or create custom profiles
- Unique Fixture Designer – Fixture-based design principles make programming swift and easy
- Ability to drive non-RGB fixtures – RGBI and level only fixtures such as bulbs and dimmers
- Shutter Control of fixtures
- Control Channel Mapping - fixture specific additional channels easily programmed or routed through to control console
- Advanced Super-Sampling – Smooths the edges on low resolution displays.

So what is Pixelmapper?



Pixelmapper is a software based plug-in resident on the Hippotizer that enables the use of video to control lighting rigs, predominantly LED fixtures, without the need to employ complicated cue-lists. In a traditional Hippotizer setup the system mixes a number of video and still images internally to produce a single picture. This picture is then fed via the VGA or Video port as video to a projector, screen or similar. When you use Pixelmapper with the Hippotizer, this picture is 'hijacked' before the output and converted to a set of DMX values and

channels as used by most lighting control systems. These signals can then be sent to a whole host of DMX compatible lighting fixtures such as LED battens or moving lights via Hippotizer's on-board Ethernet port.

Why Use Pixel Mapper?

With the advent of LED based fixtures and Ethernet based control protocols, we are starting to see more and more individually controlled lighting instruments appearing in today's lighting rigs. Controlling these fixtures using video instead of a traditional lighting console enables the designer to be able to program thousands of fixtures simultaneously with very complicated chases, patterns and effects with a single simple command on the lighting console, a process that would be almost impossible if you were programming the chases by hand – Imagine having to program a 100 x 200 grid of LED fixtures to do a colour wash from left to right, that's 60,000 DMX channels (3 for each LED) that have to be programmed in every step of the chase, and at least 100 steps in the chase!

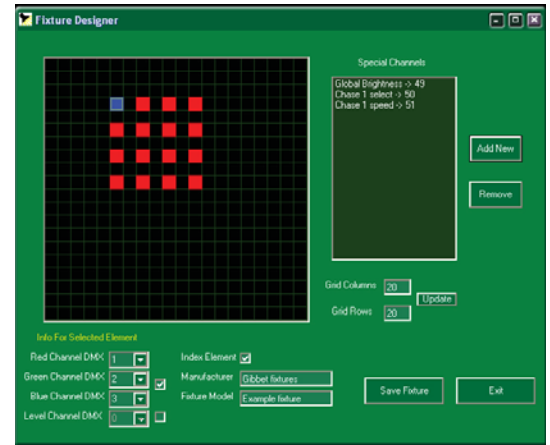
With Pixelmapper you would simply load a colour wash video-clip and that would be it done. And with hundreds of sample clips included you have a huge palette to choose from.



How does it work?

The images created by the Hippotizer are made up of thousands of small dots called pixels. Each pixel contains three colours – red, green and blue. When using Pixelmapper, each individual pixel is translated to a set of 4 individual values between 0 and 255 representing each of the red, green, blue and intensity values. This is the 'language' that LED fixtures understand. These values can then be sent via DMX to the device, which uses them to generate the correct colour at the correct brightness. If enough of these fixtures are placed in a grid, each receiving its own colour and brightness information from Pixelmapper, then you will begin to recreate the source picture across the group of lights. By carefully selecting your video content you can create very sophisticated effects using very little programming time.

Often the layout of the light fixtures on your stage is a unique grid design, and in this case there needs to be a way of telling the Hippotizer which lights are where, and what DMX addresses they all have – this is where Pixelmapper comes in. With Pixelmapper, you can create a graphical representation of the layout of the lights on your stage. Pixelmapper will then automatically create a special patch file that the Hippotizer will use to know where each light is and make sure that the fixture gets the right information.



The Fixture Designer



Pixelmapper hard at work on the Basement Jaxx tour 2005

